



## Service Learning: Rooted in the UIW Mission

At UIW, Service Learning can enrich your class, provide novel opportunities to meet your course objectives, and expand upon the traditional notion of the classroom.

Each time you do a service learning project in your class be sure and record it. Service Learning is part of the UIW effort for students to learn civic responsibility and to make volunteer service a life-long commitment. While all undergraduate students need to complete community service before graduating, Service Learning is more than that. It consists of the following components (See Figure 1).

*Service Learning, a proven way to increase student engagement and success! <sup>1</sup>*

- A. required in a class or a program and relates to one or more learning outcomes,
- B. completed to better understand course content,
- C. related to concern for the well-being of the community, and
- D. helps students reflect, find meaning in their lives, and keep engaged for the future.

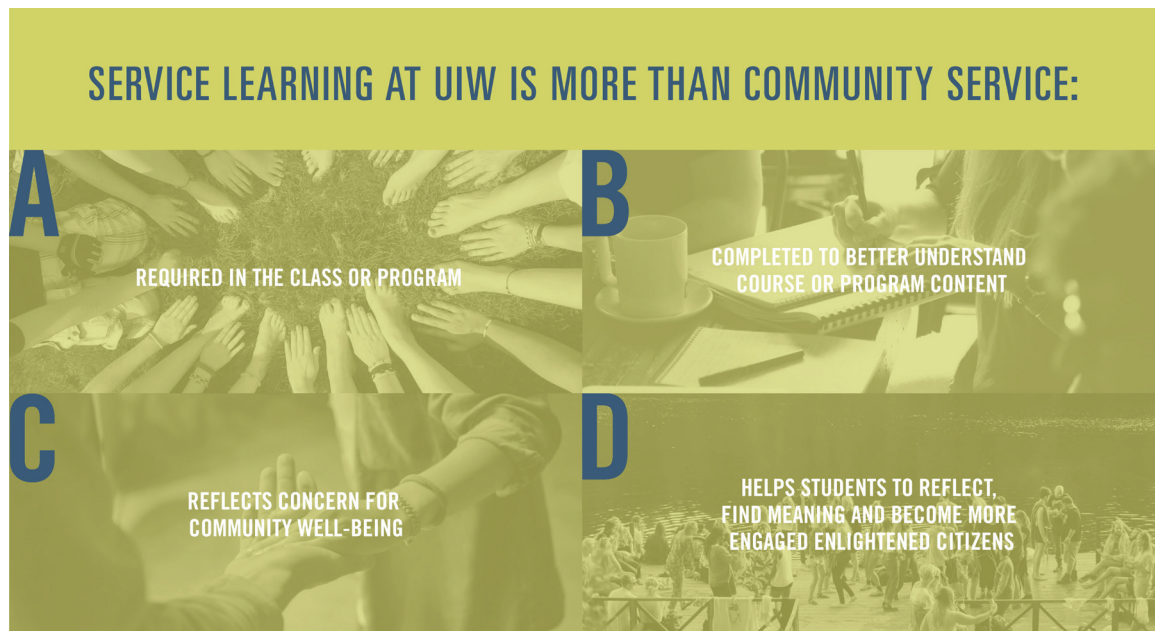


Figure 1 . Definition of Service Learning at The University of the Incarnate Word.

1. Erin McLaughlin, 'The 'Real-World' Experience: Students' Perspectives on Service-Learning Projects. American Journal of Business Education, 3:7 (July 2010), 109-117.

There are three basic forms of service learning, depending upon your desired level of commitment and involvement. You can choose from single events and activities to semester-long partnerships. By linking course material with Service Learning Projects, you can strengthen core competencies by designing targeted activities (See Figure 2).

*Watch for a Call for Proposals for the Annual Service Learning Showcase during Research Week, April 8-12, 2019.*

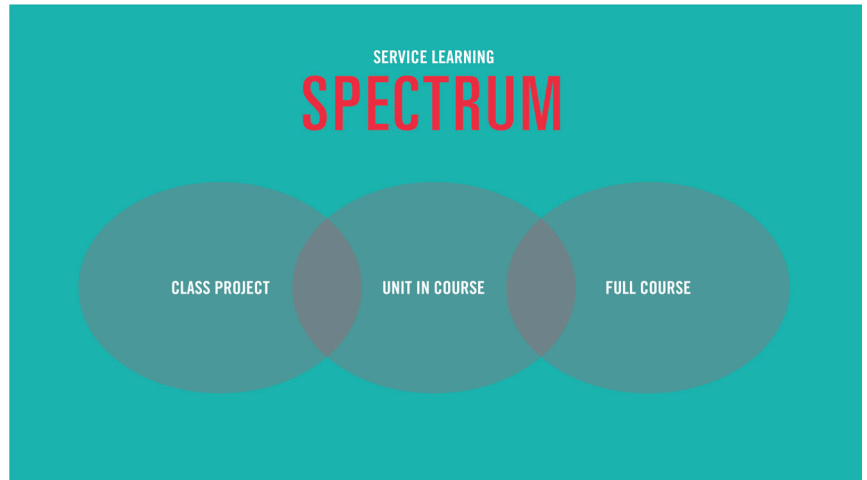


Figure 2. Service Learning Spectrum

A 4-5 step process helps you initiate a service learning project. With the support of the Ettlign Center, you find an organization to dedicate to; define the objectives and scope of the project; decide on learning outcomes and skills students will need to apply; and determine how to measure impacts. (See Figure 3).

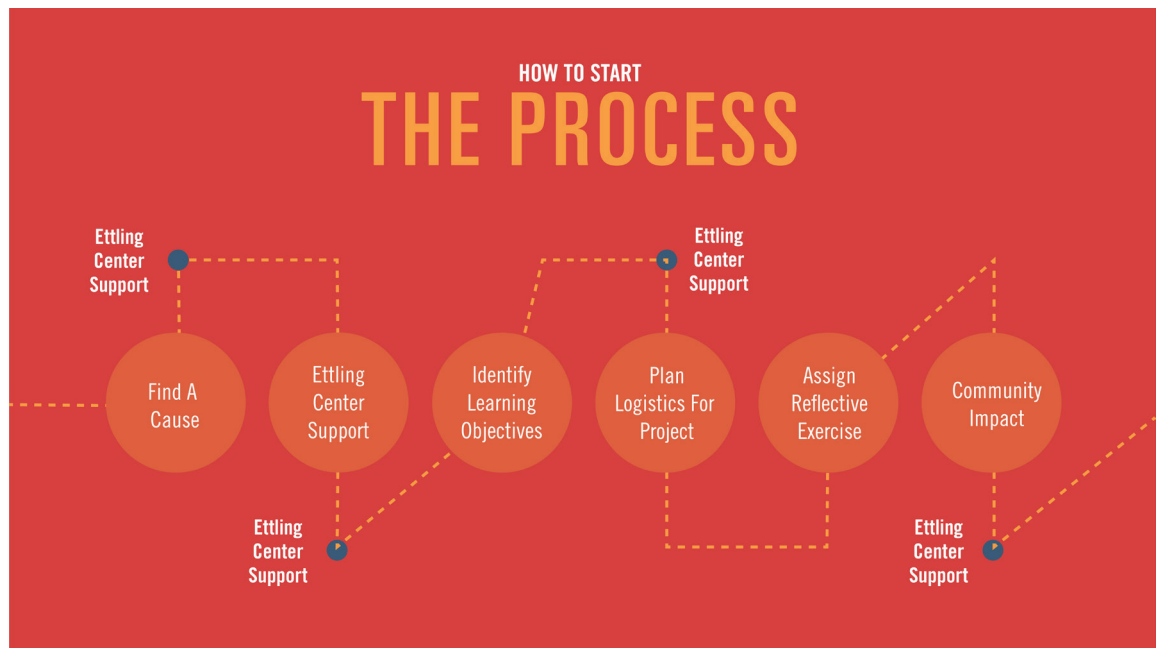


Figure 3. How to Start the Process.

Benefits of Service Learning extend both within and beyond the UIW community. Through experiential learning, students develop their abilities for empathy and reflection. Faculty increase teaching effectiveness and contribute to UIW's Mission, and together we build relationships with the larger San Antonio community, while providing valuable services (See Figure 4).

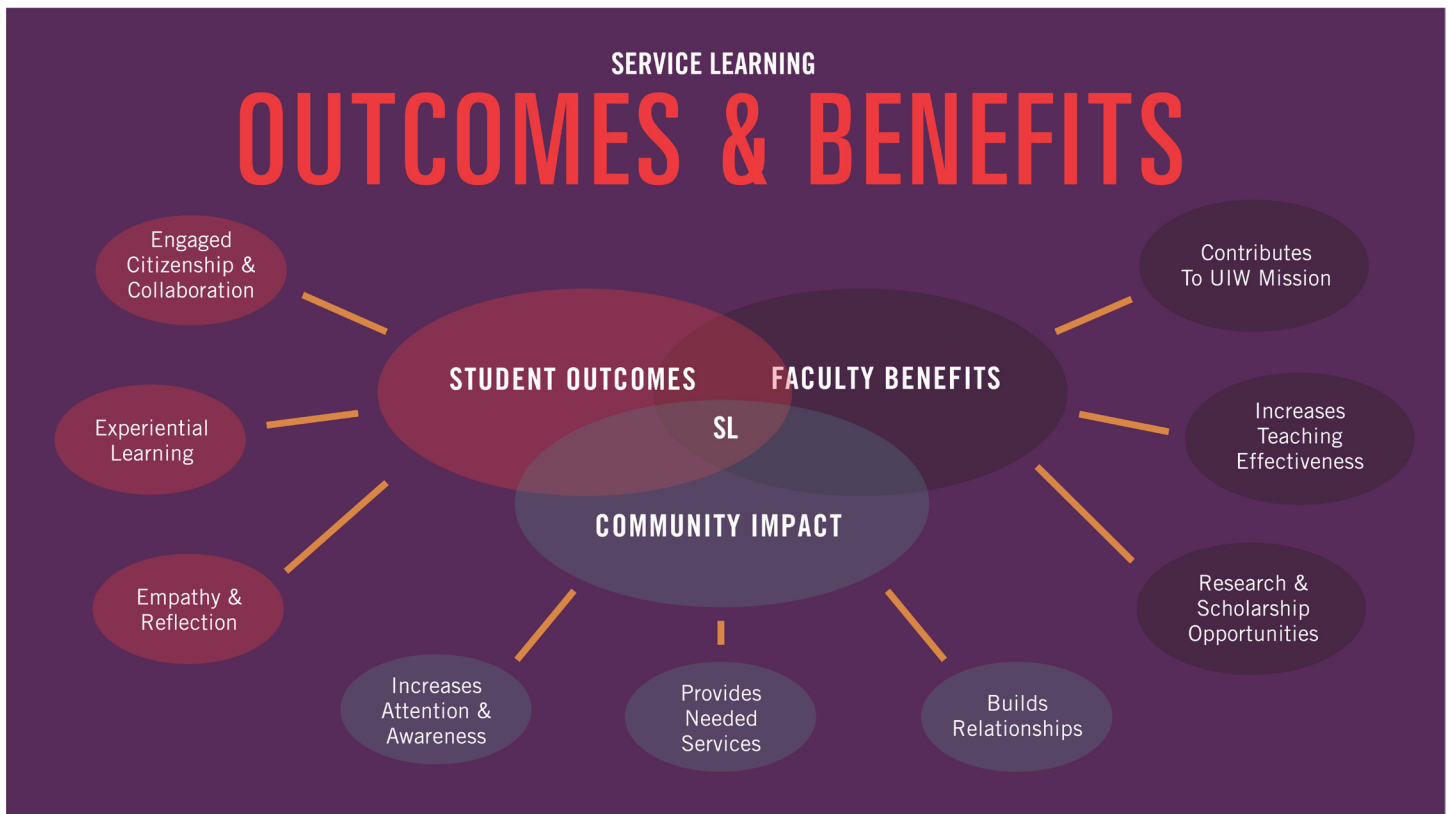


Figure 4. Outcomes and Benefits.

by clicking the Recording Service Learning Form <https://orgsync.com/49690/forms/199176> When writing your Faculty Self Inventory, please remember that service learning is valued and should be documented on Sedona. The directions for that are posted on BlackBoard in the Faculty Repository site with the title "Intro Service Learning Code in Sedona."

*By incorporating Service Learning into a course, you and your students become a living branch of the UIW Mission.*



### **UIW Faculty Service Learning Committee (SLC)**

Faculty members include representatives from each UIW School.

Co-Chairs, 2018-2019

Dr. Chad Jackson, Physical Therapy

Dr. Lisa Lockhart, Psychology

<http://uiw.edu/eccl/Faculty-Resources/service-and-service-learning-guidelines.html>

### **The Ettlign Center for Civic Leadership and Sustainability (ECCLS)**

Dr. Ricardo Gonzalez, *ECCLS Director*

Yesenia Caloca, *Campus Community Service Coordinator*

Teofilo Reyes Jr., *Community Outreach Coordinator*

Robert San Martin, *Center Coordinator*

Sister Martha Ann Kirk, *Faculty Liaison*

General information <http://uiw.edu/eccl/>

(210) 283-6423, visit the office in the Broadway campus

Administration Building 158, or write [ccl@uiwtx.edu](mailto:ccl@uiwtx.edu)

*UIW resources  
for implementing  
Service Learning.*



### **Center for Teaching & Learning (CTL)**

Dr. Susan Hall, *Director*

Kathy Allwein, *Administrative Assistant*

<http://uiw.edu/eccl/ctl>

### **Community Resources**

Listings of local community partners

<http://uiw.edu/eccl/communitypartnerships/local-partners.html>

<http://uiw.edu/eccl/Faculty-Resources/placesforservice.html>